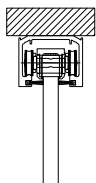


Ausführung

Typ

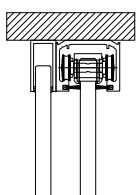
Seite



Schiebeflügel Deckenmontage

A

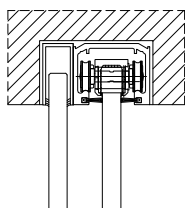
08.06



Schiebeflügel + Fixteil

B

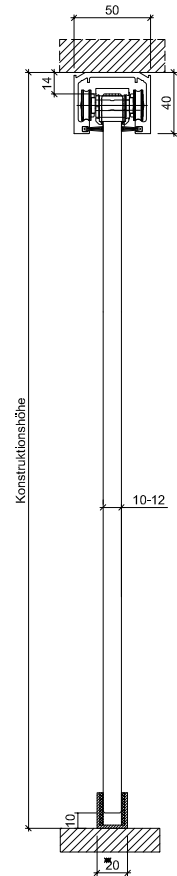
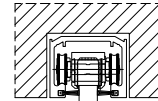
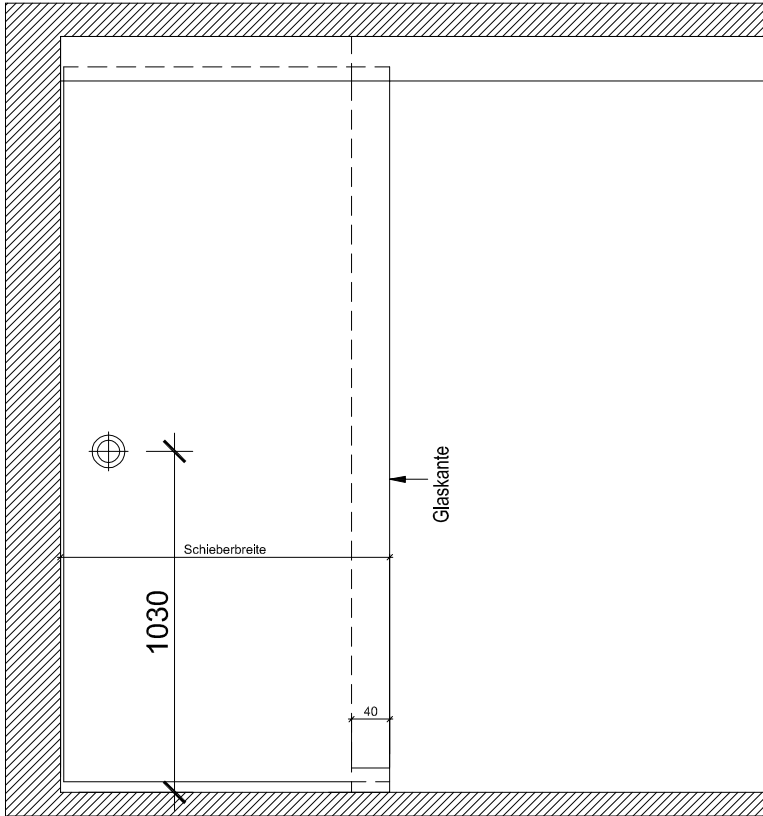
08.07



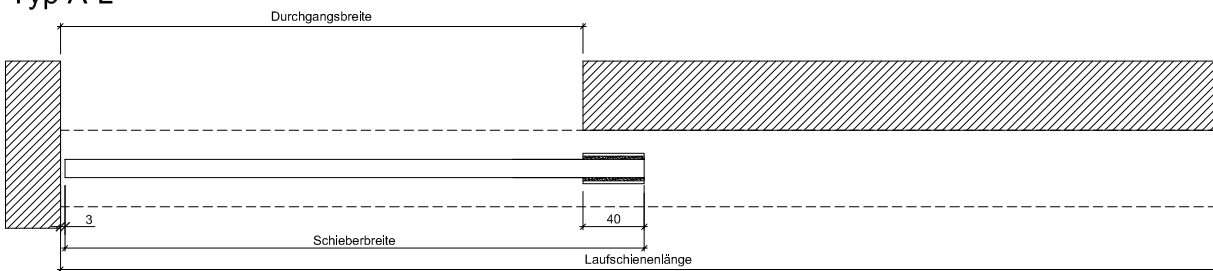
Einbau in Decke

C

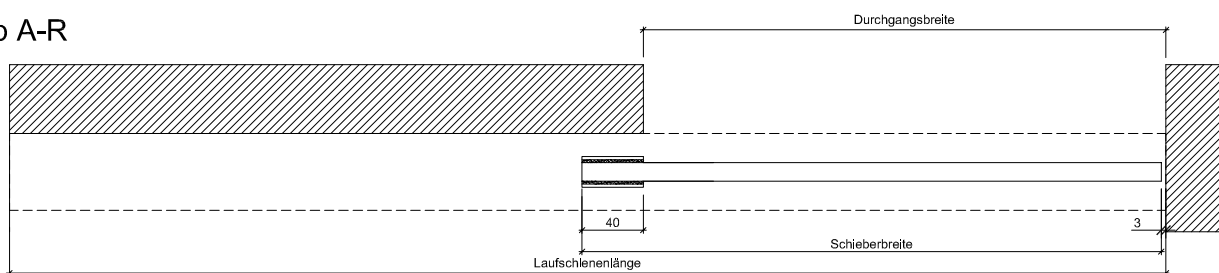
08.07

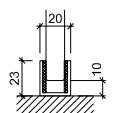
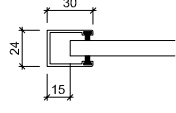
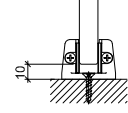
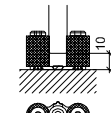


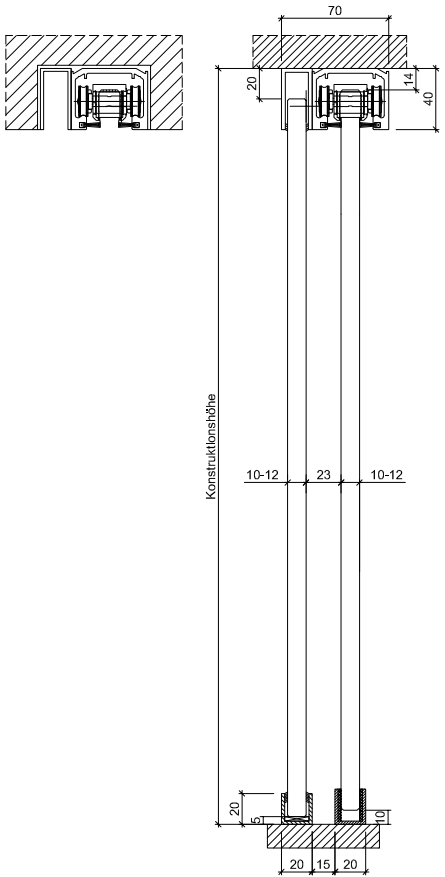
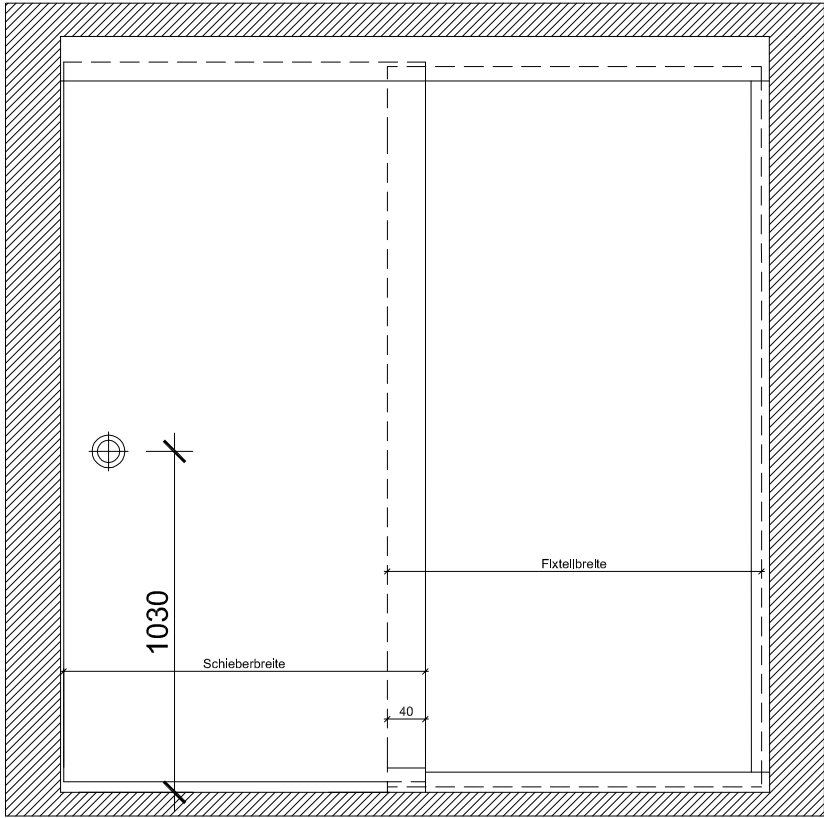
## Typ A-L



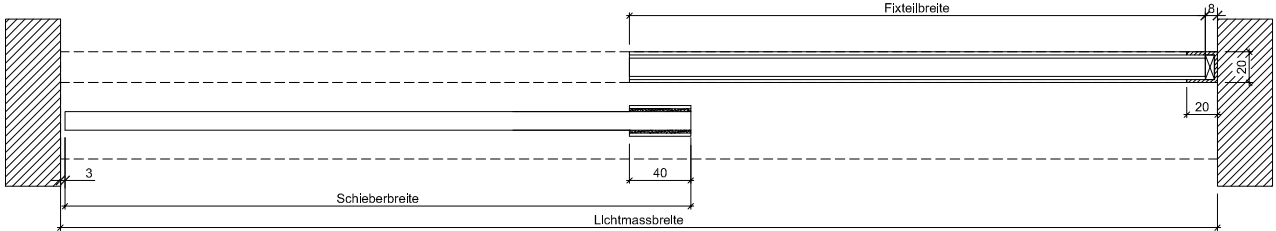
## Typ A-R



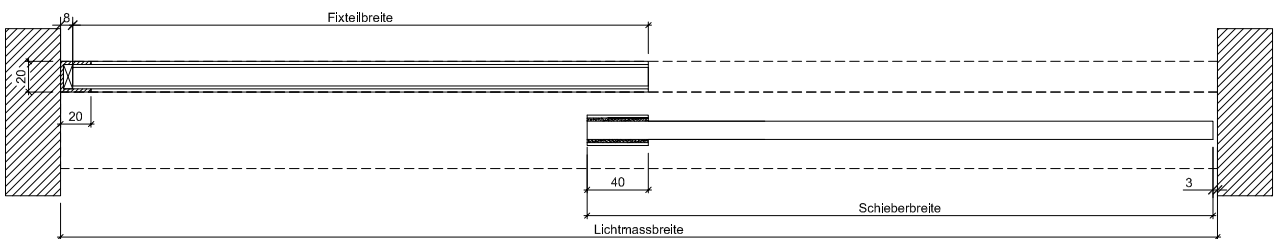
Standarddetail	Varianten		
untere Führung Art.Nr. 56 9500 	seitliches Einlaufprofil 	untere Führung Art.Nr. 57 3082 	untere Führung Art.Nr. 59 3019 



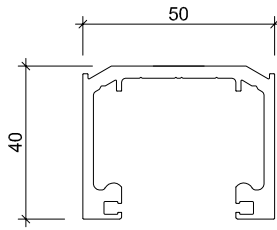
## Typ B-L



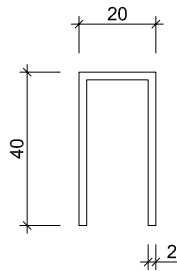
## Typ B-R



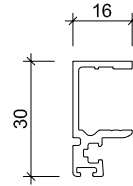
Standarddetail	Varianten		
untere Führung Art.Nr. 56 9500 	seitliches Einlaufprofil 	untere Führung Art.Nr. 57 3082 	Mitnehmerprofil Art.Nr. 50 9304 



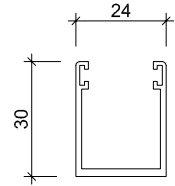
Art. Nr.: **50 9415**  
 Bezeichnung: Laufschiene 1-bahnig  
 Aluminium



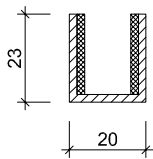
Art. Nr.: **50 8542**  
 Bezeichnung: Fixteilprofil  
 Aluminium



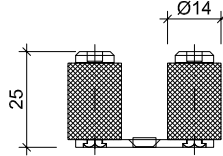
Art. Nr.: **50 9304**  
 Bezeichnung: Mitnehmerprofil  
 Aluminium



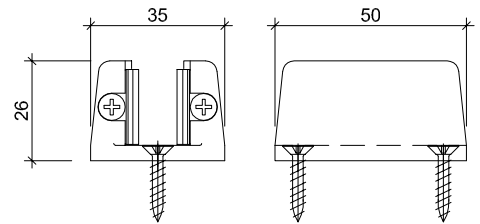
Art. Nr.: **50 9405**  
 Bezeichnung: Einlaufprofil  
 Aluminium



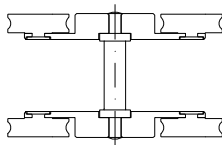
Art. Nr.: **56 9500**  
 Bezeichnung: örtliche Führung mit Filz



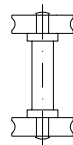
Art. Nr.: **59 3019**  
 Bezeichnung: Führung GM PIN mit Filz



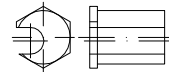
Art. Nr.: **57 3082**  
 Bezeichnung: Einstellbare  
 Bodenführung 6-12,7 mm  
 Aluminium



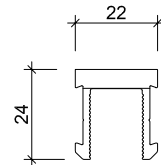
Art. Nr.: **56 9632**  
 Bezeichnung: Tandemrolle  
 für Glasgewichte bis 150 kg  
 pro Schiebeelement



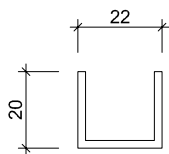
Art. Nr.: **56 9633**  
 Bezeichnung: Einfachrolle



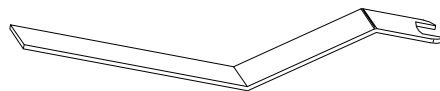
Art. Nr.: **56 9643**  
 Bezeichnung: Exzenterbuchse



Art. Nr.: **56 9644**  
 Bezeichnung: Laufsuh oben  
 300 mm lang



Art. Nr.: **04 6890** eloxiert  
**04 6891** roh  
 Bezeichnung: U-Profil Aluminium  
 20 x 22 x 2mm



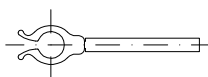
Art. Nr.: **56 9647**  
 Bezeichnung: Montageschlüssel



Art. Nr.: **54 6013**  
 Bezeichnung: Bürstendichtung  
 grau 13 mm  
 Anwendung/Profil: 50 9415



Art. Nr.: **54 6070**  
 Bezeichnung: Bürstendichtung  
 grau 7 mm  
 Anwendung/Profil: 50 9405



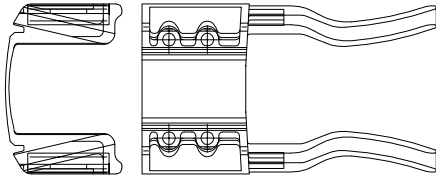
Art. Nr.: **56 9645**  
 Bezeichnung: Rollensicherung



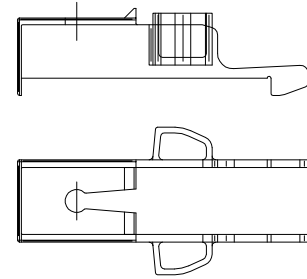
Art. Nr.: **56 9646**  
 Bezeichnung: Glassicherung



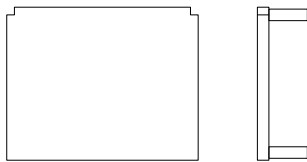
Art. Nr.: **54 6095**  
 Bezeichnung: Bürstendichtung  
 grau 9,5 mm  
 Anwendung/Profil: 50 9304



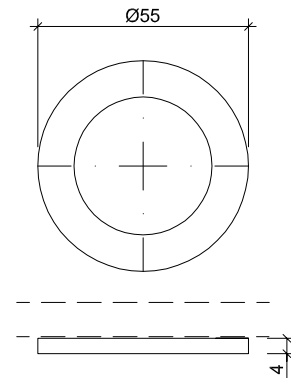
Art. Nr.: **56 9277**  
 Bezeichnung: Stopper grau



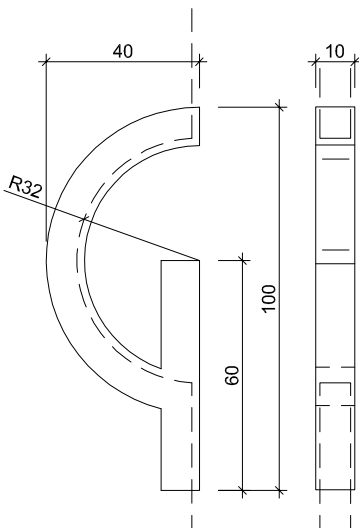
Art. Nr.: **56 9276**  
 Bezeichnung: Endstück Laufschuh grau



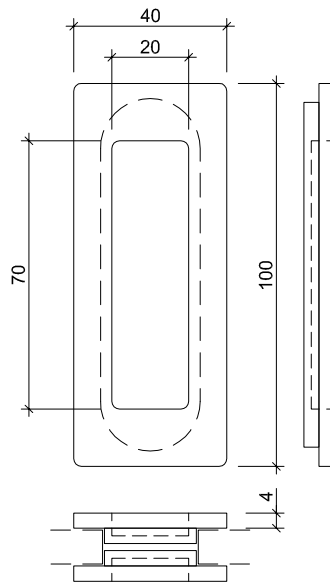
Art. Nr.: **56 9279**  
 Bezeichnung: Abdeckkappe Laufschiene  
 Kunststoff grau



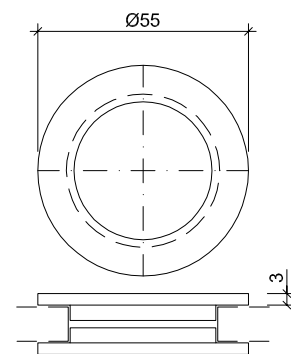
Art. Nr.: **56 6310**  
 Bezeichnung: CNS-Ring  
 Edelstahl  
 UV-verklebt  
 (nur Innen)



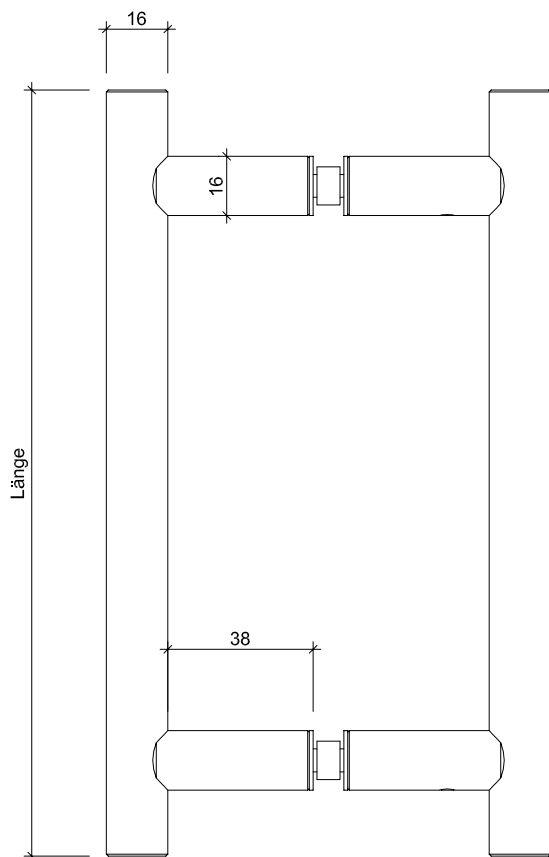
Art. Nr.: **59 0035**  
 Bezeichnung: G-Griff  
 Edelstahl



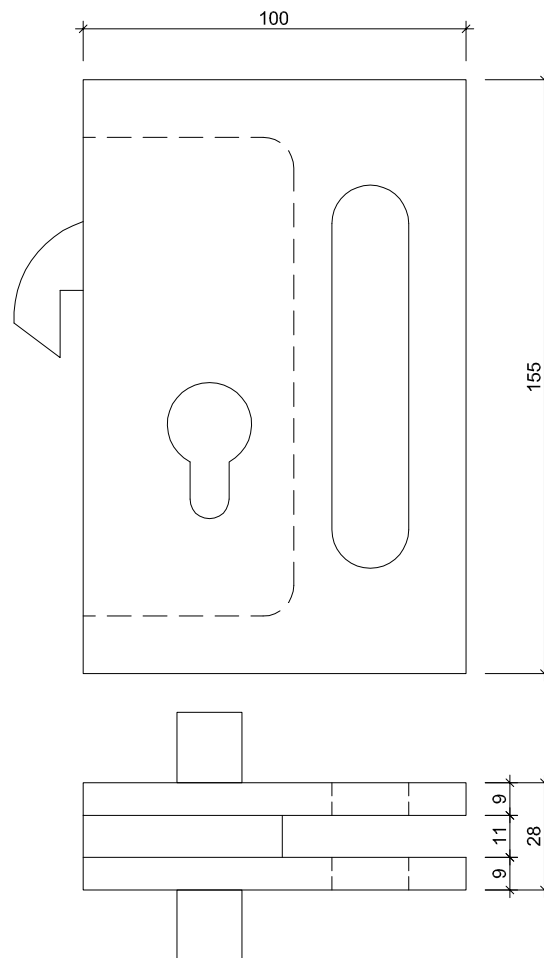
Art. Nr.: **59 0040**  
 Bezeichnung: Rechteckiger Muschelgriff  
 Edelstahl



Art. Nr.: **59 0031**  
 Bezeichnung: Muschelgriff beidseitig  
 Edelstahl



Art. Nr.: **8060-200mm Edelstahl**  
**8060-200mm Edelstahl poliert**  
**8060-300mm Edelstahl**  
**8060-300mm Edelstahl poliert**  
 Bezeichnung: Stossgriff beidseitig



Art. Nr.: **14 6000 KABA**  
 Bezeichnung: Hakenschloss für Schiebetüren  
 Aluminium eloxiert